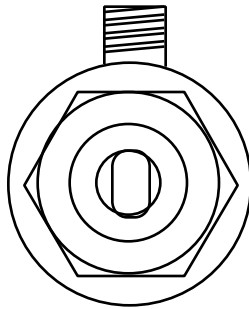




# Valve Cartridge Replacement Instructions

Jacuzzi Whirlpool Bath use two sources for valves supplied with faucet sets. You can identify the valve style by the following features:



DONSON

FIGURE 1



I.W.

FIGURE 2

Once you have correctly identified your valve, remove the faucet cartridge assembly by using a wrench on the hexagonal portion of the valve. Figure 1A shows all parts and assembly sequence for a Donson valve. Replace parts as required from the appropriate kit and reassemble. Figure 2A shows an I.W. cartridge. Remove and replace with the new cartridge.



FIGURE 1A

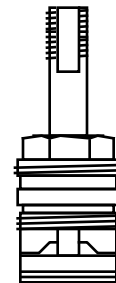


FIGURE 2A

### **CAUTION**

Since plumbing fittings may contribute detectable amounts of lead to water, the following notice is required by California Law (Proposition 65): "This product contains a chemical known to the State of California to cause birth defects or reproductive harm."  
In normal use, any lead exposure can be minimized by allowing the water to run free for several seconds before drinking.

### **IMPORTANT**

Proper installation of the fill spout and compliance with local codes is the responsibility of the installer. Jacuzzi Whirlpool Bath does not warrant connections of water supply fittings and piping, fill systems, or drain/overflow systems. Nor is it responsible for damage to the lavatory which occurs during any installation procedure.

**PRODUCT SPECIFICATIONS ARE SUBJECT TO CHANGE WITHOUT NOTICE.**

**USE INSTALLATION INSTRUCTIONS SUPPLIED WITH PRODUCT.**

Jacuzzi Whirlpool Bath has obtained applicable code (standards) listings generally available on a national basis for products of this type. It is the responsibility of the installer/owner to determine specific local code compliance prior to installation of the product. Jacuzzi Whirlpool Bath makes no representation or warranty regarding, and will not be responsible for any code compliance.

## **JACUZZI WHIRLPOOL BATH**

**Jacuzzi Whirlpool Bath National Headquarters**

P.O. Drawer J, Walnut Creek, CA 94596 (510) 938-7070

**Service Support:** Call (800) 288-4002

©1995 Jacuzzi Whirlpool Bath G721000 8/95

