

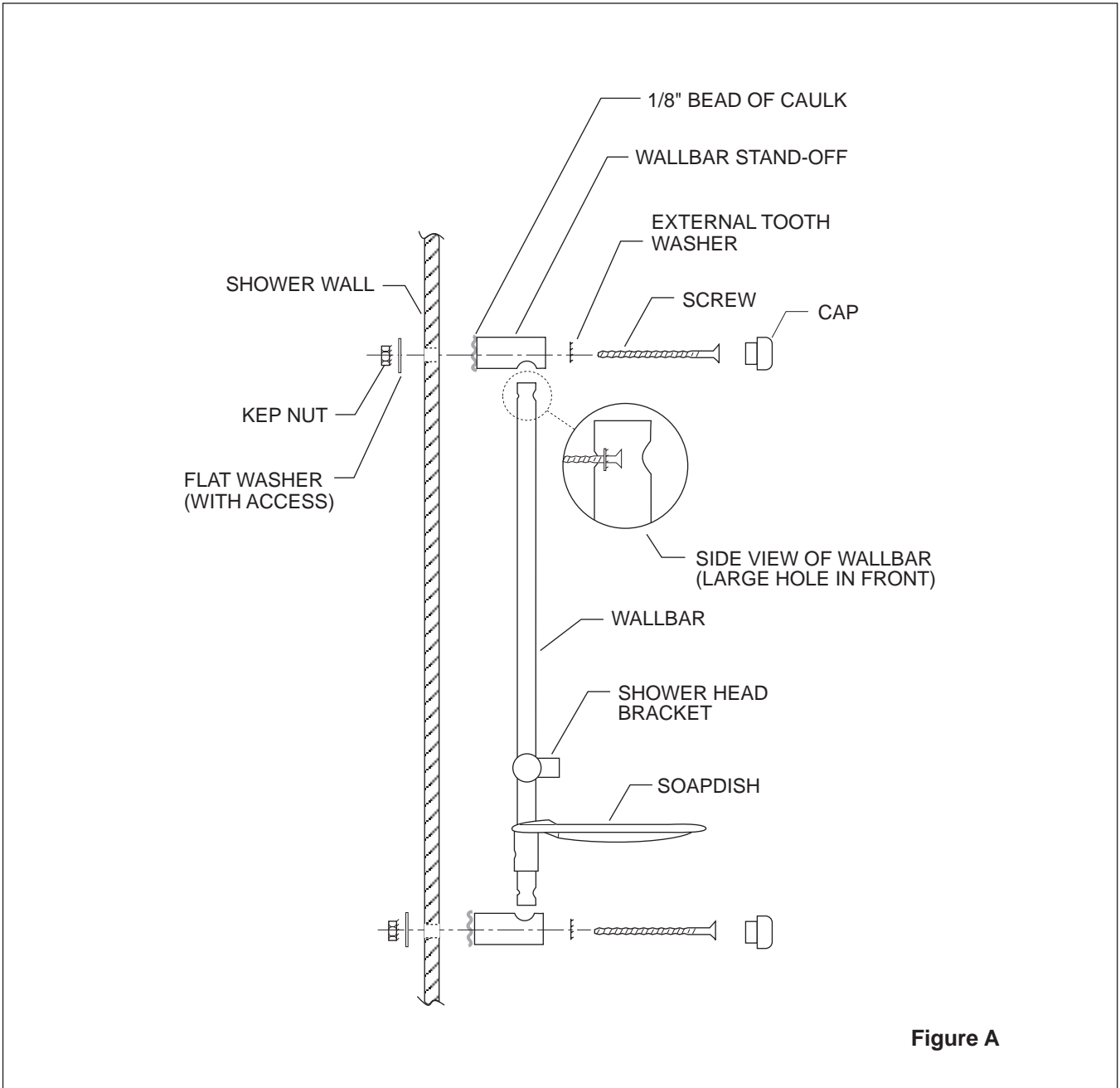


OPTICA™

WALLBAR/HAND HELD SHOWER INSTALLATION INSTRUCTIONS

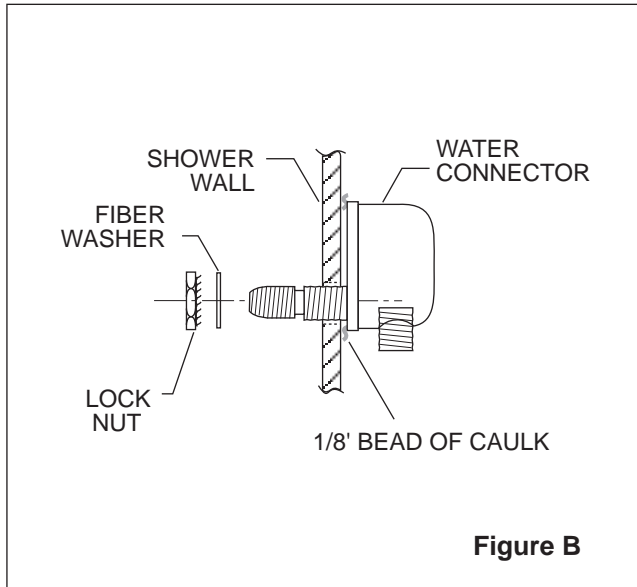
Important: Read all instructions before beginning installation or operation.

1. After determining the mounting location of the wall bar, drill two 1/4" diameter holes at 22-7/8" center lines through the wall. Caulk and assemble as shown in Figure A.
2. If toggles bolts are used, drill holes 9/16" diameter for clearance.



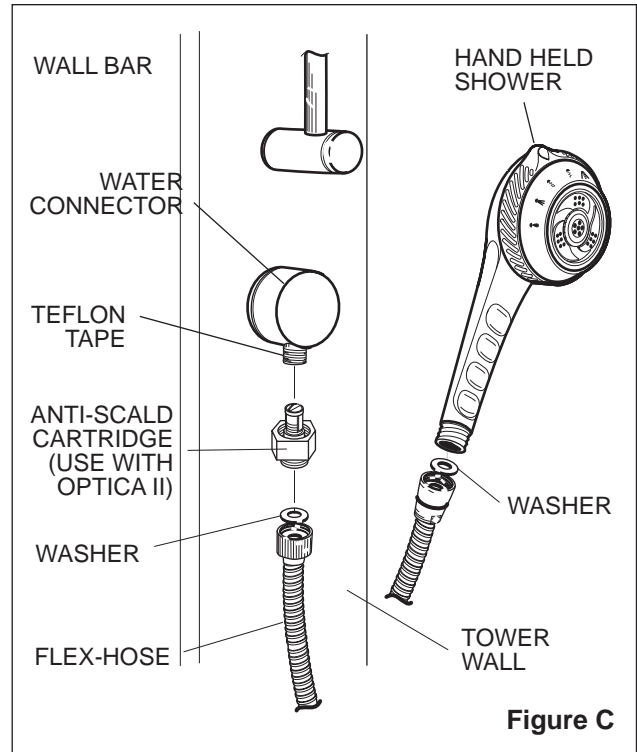
Water Connector Assembly

The water connector should be located below or on either side of the wall bar assembly. Drill a 13/16" diameter hole in the wall. Caulk and assemble as shown in Figure B.



Hose and Shower Assembly

Place washers in each end of the flex-hose and tighten onto water connector and shower head as shown in Figure C.



CAUTION

Since plumbing fittings may contribute detectable amounts of lead to water, the following notice is required by California law (Proposition 65). "This product contains a chemical known to the State of California to cause birth defects or reproductive harm." In normal use, any lead exposure can be minimized by allowing the water to run free for several seconds before drinking.

Proper Installation of the fill spout and compliance with local codes is the responsibility of the installer. Jacuzzi Whirlpool Bath does not warrant connections of water supply fittings and piping, fill systems, or drain/overflow systems. Nor is it responsible for damage to the bath (or spa) which occurs during any installation procedure.

JACUZZI WHIRLPOOL BATH

Jacuzzi Whirlpool Bath National Headquarters
P.O. Drawer J, Walnut Creek, CA 94596 (510) 938-7070
Customer Service: Call (510) 938-7411

©1994 Jacuzzi Whirlpool Bath E341000 01/94



Printed on Recycled Paper

Printed in U.S.A.