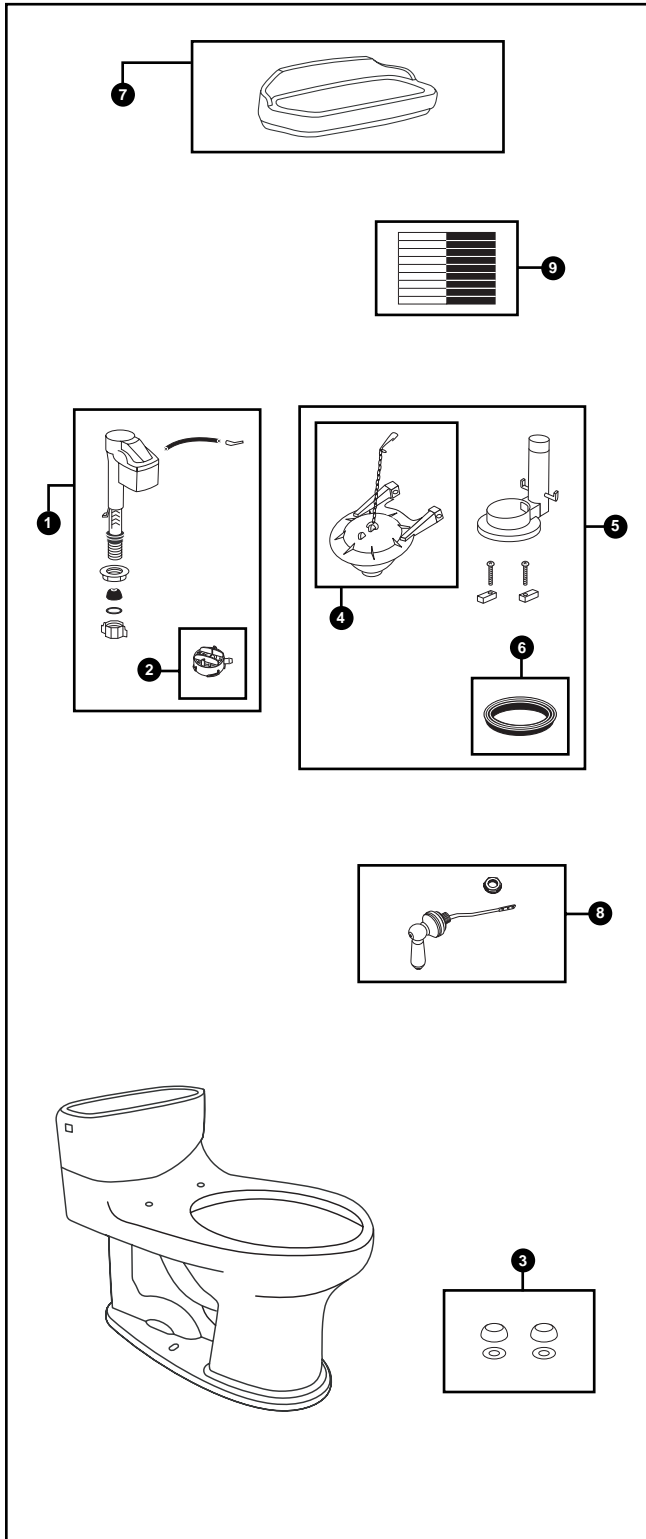


MS924154F
CST924

Plymouth, 1.6 GPF Toilet, Elongated
Universal Height
12" Rough-In



No.	Part Number	Description	Qty	Price
1	TSU04A.5	Fill Valve	1	\$23.00
2	THU123	Diaphragm Cap	1	\$4.00
3	THU098#01	Bolt Cap Sets	10	\$5.00
	THU098#03	Bolt Cap Sets	10	\$5.00
	THU098#04	Bolt Cap Sets	10	\$6.00
	THU098#51	Bolt Cap Sets	10	\$6.00
4	THU140S	Flapper w/ Chain	1	\$10.00
5	THU128Z-1	Flush Valve	1	\$23.00
6	THU097	Flush Valve Gaskets	10	\$22.00
7	TCU924CR#01	Tank Lid w/ Velcro Tape	1	\$80.00
	TCU924CR#03	Tank Lid w/ Velcro Tape	1	\$92.00
	TCU924CR#04	Tank Lid w/ Velcro Tape	1	\$92.00
	TCU924CR#11	Tank Lid w/ Velcro Tape	1	\$80.00
	TCU924CR#12	Tank Lid w/ Velcro Tape	1	\$92.00
	TCU924CR#51	Tank Lid w/ Velcro Tape	1	\$120.00
8	THU147#01	Trip Lever	1	\$40.00
	THU147#03	Trip Lever	1	\$40.00
	THU147#04	Trip Lever	1	\$40.00
	THU147#12	Trip Lever	1	\$40.00
	THU147#51	Trip Lever	1	\$40.00
	THU147#CP	Trip Lever	1	\$40.00
	THU147#PB	Trip Lever	1	\$89.00
	THU147#SB	Trip Lever	1	\$89.00
	THU147#SN	Trip Lever	1	\$89.00
9	THU107	Velcro Tape	1	\$6.00

Note: THU147 has left-hand threads.

Model Explanation
 Toilet & Seat Combination (MS)
 Toilet Model (924)
 Traditional Soft Close Seat Number (154)
 Universal Height (F)

TOTO Whites	Basic Colors	Premium Colors	Finishes
01 - Cotton	12 - Sedona Beige	51 - Ebony	CP - Chrome Plated
11 - Colonial White	03 - Bone		PB - Polished Brass
	04 - Gray		SB - Satin Brass
			SN - Satin Nickel