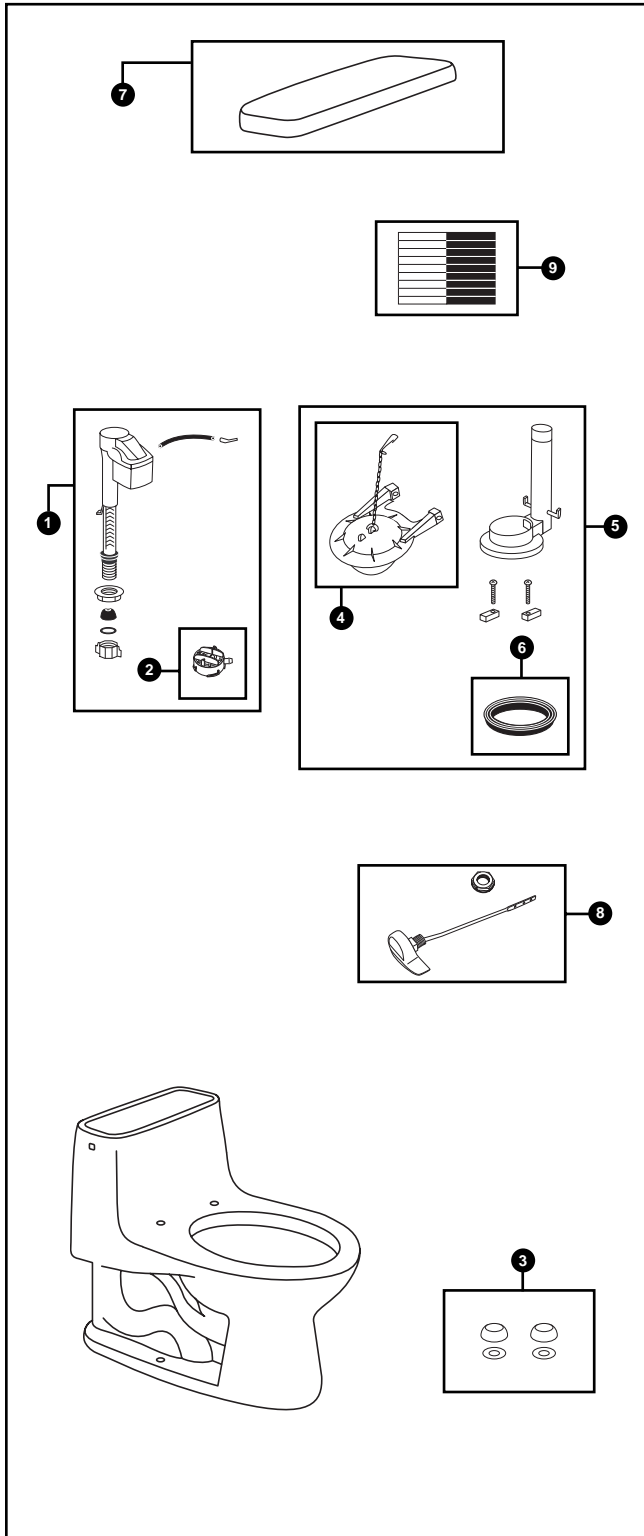


MS854114SG MS854114S  
CST854SG CST854S

Ultramax, 1.6 GPF Toilet, Elongated  
12" Rough-In



No.	Part Number	Description	Qty	Price
1	TSU05A.11	Fill Valve	1	\$23.00
2	THU123	Diaphragm Cap	1	\$4.00
3	THU098#01	Bolt Cap Sets	10	\$5.00
	THU098#03	Bolt Cap Sets	10	\$5.00
	THU098#04	Bolt Cap Sets	10	\$6.00
	THU098#51	Bolt Cap Sets	10	\$6.00
4	THU138S	Flapper w/ Chain	1	\$10.00
5	THU013Z	Flush Valve	1	\$23.00
6	THU097	Flush Valve Gaskets	10	\$22.00
7	TCU854CR#01	Tank Lid w/ Velcro Tape	1	\$50.00
	TCU854CR#03	Tank Lid w/ Velcro Tape	1	\$58.00
	TCU854CR#04	Tank Lid w/ Velcro Tape	1	\$58.00
	TCU854CR#11	Tank Lid w/ Velcro Tape	1	\$50.00
	TCU854CR#12	Tank Lid w/ Velcro Tape	1	\$58.00
	TCU854CR#51	Tank Lid w/ Velcro Tape	1	\$75.00
8	THU004#01	Trip Lever	1	\$22.00
	THU004#03	Trip Lever	1	\$22.00
	THU004#04	Trip Lever	1	\$22.00
	THU004#11	Trip Lever	1	\$22.00
	THU004#12	Trip Lever	1	\$22.00
	THU004#51	Trip Lever	1	\$22.00
	THU004#CP	Trip Lever	1	\$22.00
	THU004#PB	Trip Lever	1	\$43.00
	THU004#SN	Trip Lever	1	\$43.00
9	THU107	Velcro Tape	1	\$6.00

Model Explanation  
 Toilet & Seat Combination (MS)  
 Toilet Model (854)  
 Soft Close Seat Number (114)  
 G-Max (S)  
 SanaGloss (G)

<u>TOTO Whites</u>	<u>Basic Colors</u>	<u>Premium Colors</u>	<u>Finishes</u>
01 - Cotton	12 - Sedona Beige	51 - Ebony	CP - Chrome Plated
11 - Colonial White	03 - Bone		PB - Polished Brass
	04 - Gray		