

OPTIONAL HEATING UPGRADE

Energy demand on your spa heating system is increased by cold temperatures and high wind conditions. Your spa is versatile and can be converted for 5.5 kW heater output as an optional upgrade in heating capacity. With this option, the spa heat rise per hour will be four times greater.

To increase the heating capability of your spa's heater and convert the output from 1.25kW to 5.5 kW (21 AMP), your spa can be hard-wired on-site in approved conduit (or with approved power cable) to operate at 230 VAC, 50 AMPS. This requires a separate GFCI protected circuit which will not be shared by any other appliance. We recommend that this wiring be done by a qualified electrician. A wiring diagram is provided on the inside of the electrical cabinet adjacent to the terminal block. When this conversion to 230 VAC has been made, any combination of operating modes is possible, including having the heater on when the whirlpool mode is activated.

To convert to 230 VAC, 50 AMP operation:

1. Turn OFF 20 AMP breaker at main electrical panel.
2. Open the skirt door access panel.
3. Loosen and remove 4 screws securing the electrical cabinet cover and set them aside.
4. Loosen screws at bottom side of terminal block and remove power cord cable clamp. Remove and discard GFCI power cord.
5. Install 230 VAC 4-wire power cord in accordance with local code requirements. Wiring must be of sufficient gauge to carry 50 AMPS. Insert the wires into the bottom side of the terminal block and tighten the screws. Refer to Figure 1.
6. Loosen the screws on the top side of the terminal block at positions 1 and 4. Move the red wire from position 1 to position 4. Tighten the screw at position 4. Refer to Figure 1.
7. Move the jumper at circuit board location J8 from 20A position to 50A position. Refer to Figures 1 and 2.
8. Replace electrical cabinet cover and tighten screws. Refer to Figure 3.
9. Make sure spa is filled with water to proper level.
10. Install a 50 AMP GFCI breaker at the main electrical panel and connect wiring from the spa electrical cabinet.
11. Turn ON the 50 AMP GFCI breaker.
12. Test GFCI for proper operation.

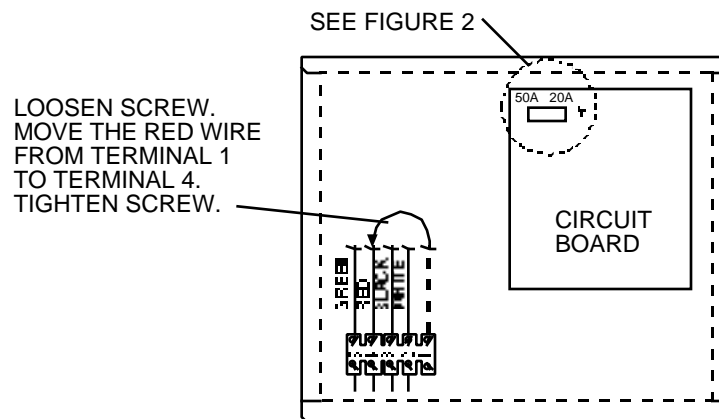


FIGURE 1

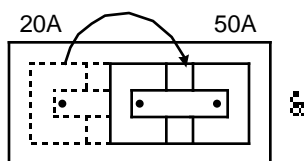


FIGURE 2

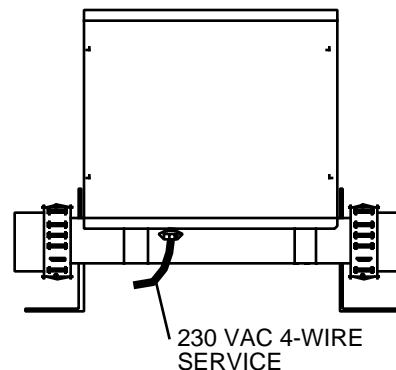


FIGURE 3

